

GRIFAID[®]

Community Filter

USER GUIDE



SAFETY

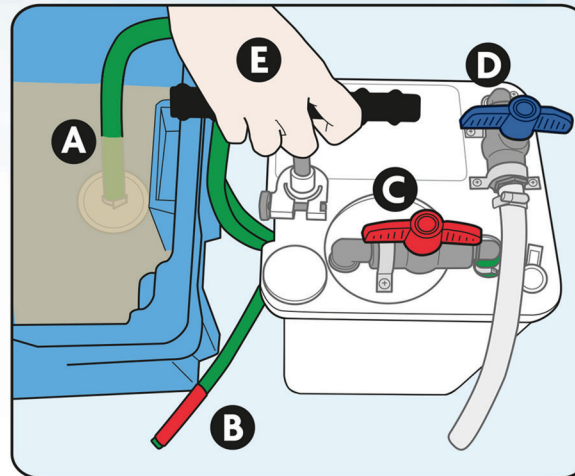
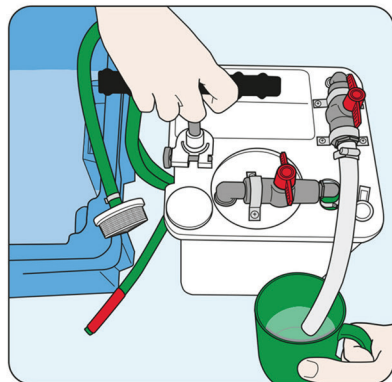
1. **NEVER** drink water from pipe with the red stopper.
2. Empty dirty water in the bottom of the box or bucket once a week.
3. **DO NOT** store in sunlight. The heat could damage the filter.

4. CHECK water is clean-

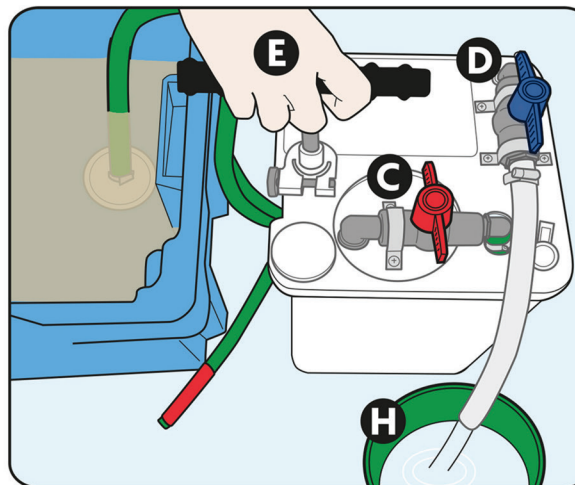
- Take inlet out of dirty water.
- Turn taps as shown.
- Put outlet pipe into a mug of clean water.
- Pump.
- If bubbles keep coming out of the outlet pipe,

THE FILTER MAY BE FAULTY.

STOP USING IT AND CONTACT YOUR SUPPLIER.



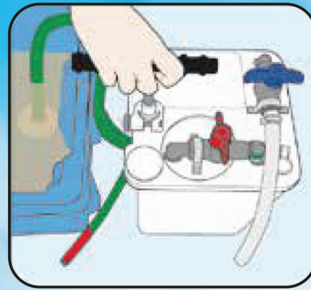
1. • Inlet pipe (A) in dirty water box.
• Red ended pipe (B) outside the box.
• Taps (C), (D) as shown above.
• Pump (E) until water comes out of red ended hose (B).



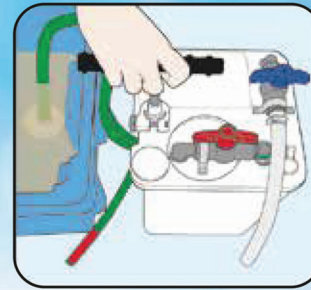
2. • Turn taps (C), (D) as shown above.
• Pump (E) for clean water (H).
3. • After use, turn tap (D) to its original position to close.

BACK FLUSH

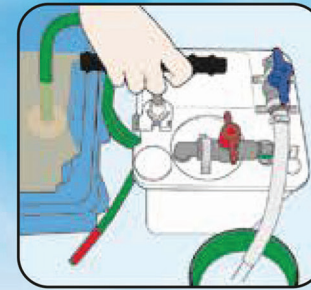
IF WATER FLOW REDUCES



1. Turn **red taps** as shown. Pump 4 times.



2. Turn **red taps** as shown. Pump 8 times.



3. Turn **red taps** as shown. Pump clean water.

4. If water flow is still low repeat 1, 2 and 3.

CLEAN THE INLET PIPE AND PRE-FILTER

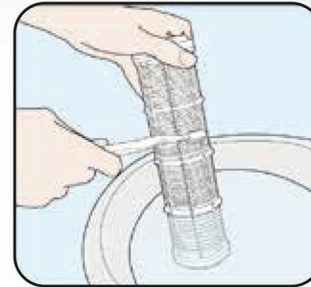
IF WATER FLOW IS NO BETTER



5. Clean the inlet pipe.



6. Unscrew the pre-filter housing.



7. Clean the mesh pre-filter housing.



8. Replace the housing.

GRIFAID[®]

Community Filter



The Safe Water Trust
+44 191 340 0583

www.grifaid.org